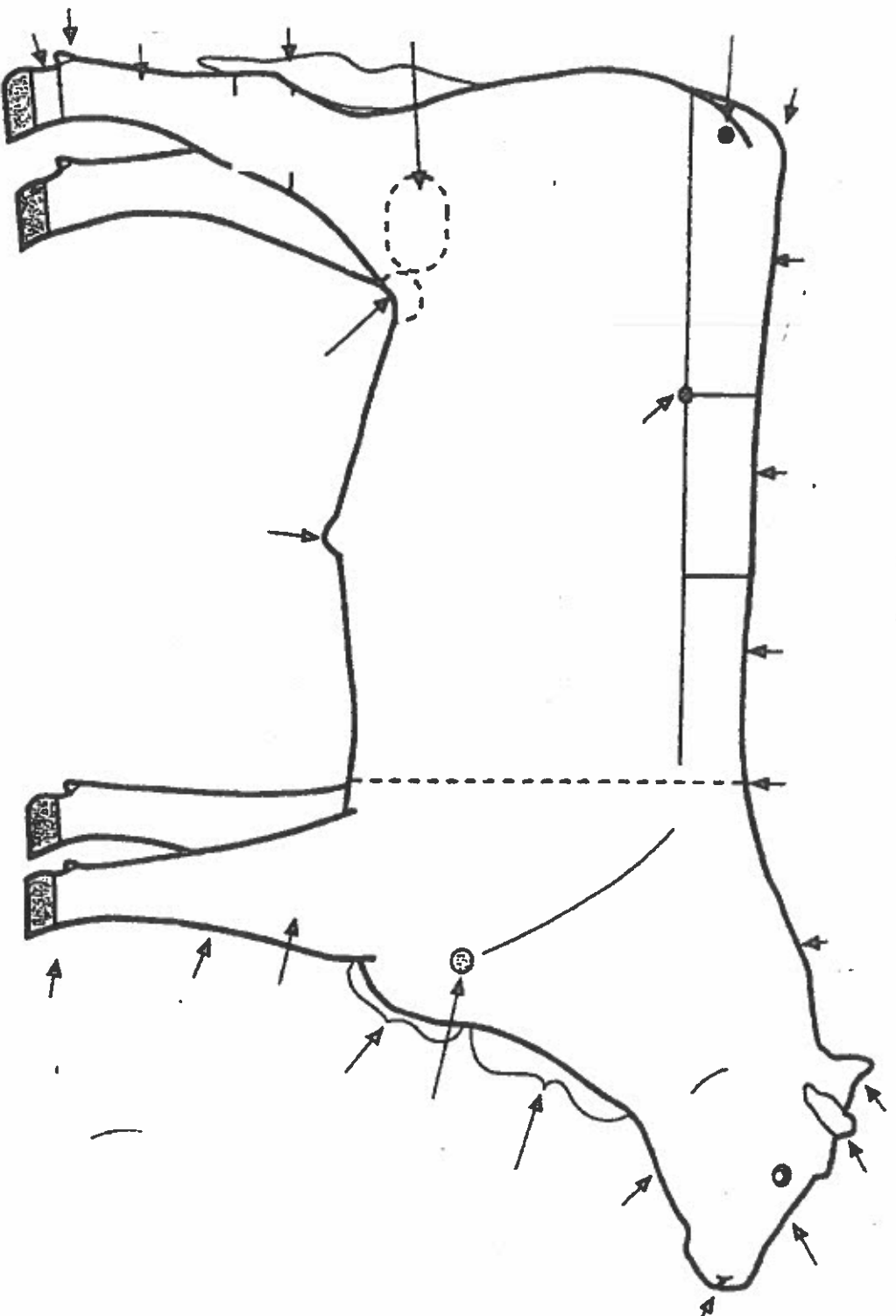

**Clinton County
Junior Fair
Beef
Skillathon
Study Guide**

Parts of a Beef Animal



Beef Skillathon

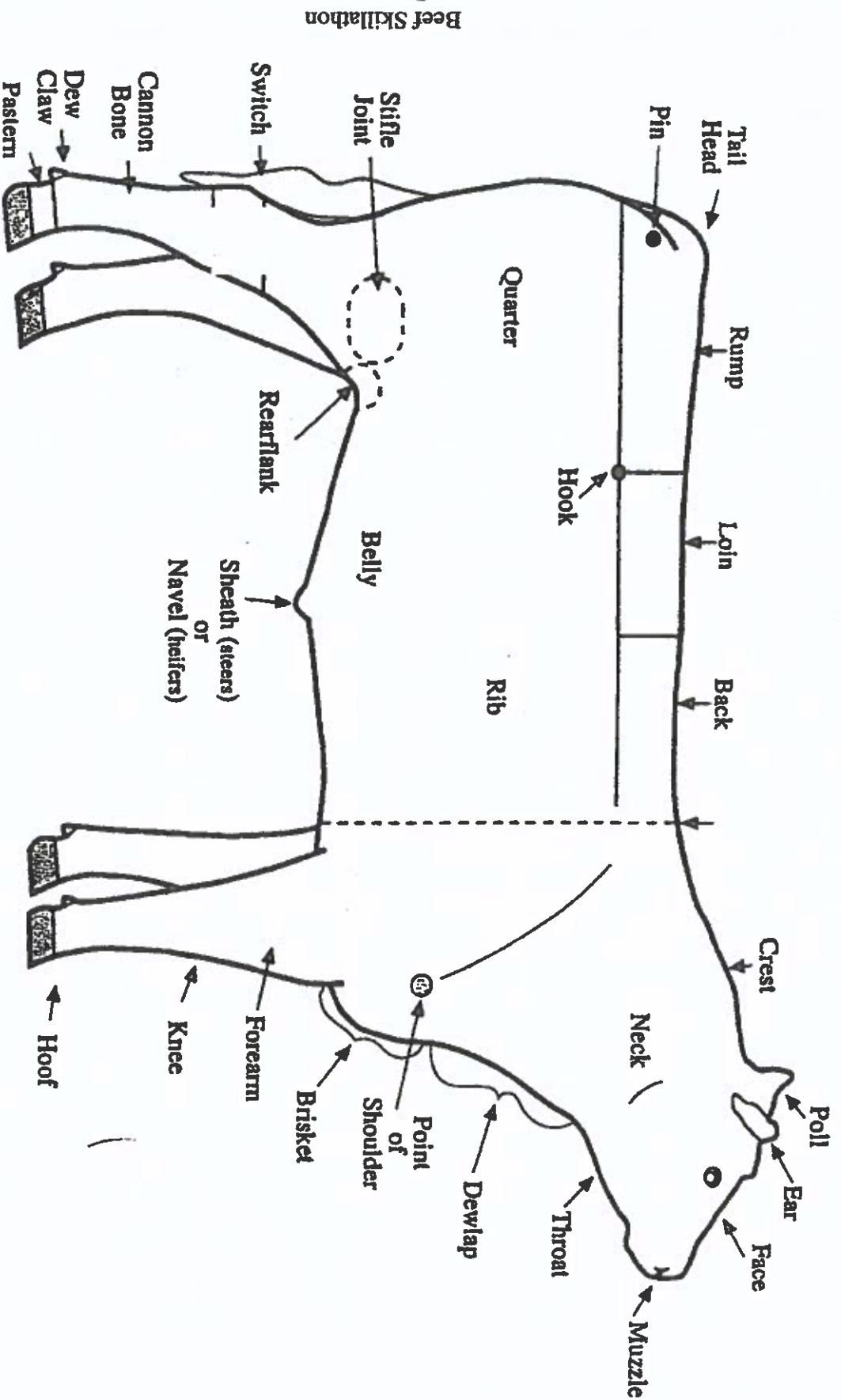


LEARNING LABORATORY KIT

Quality Assurance and Animal Care Youth Education Program
This material is based upon work supported by Extension Service,
United States Department of Agriculture, under special project number 93-EFSQ-4096.
Graphic used with the express permission of the Ohio State University Extension.

Product distribution through the Ohio Agricultural Education Curriculum Materials Service

Parts of a Beef Animal



Beef Skillathon

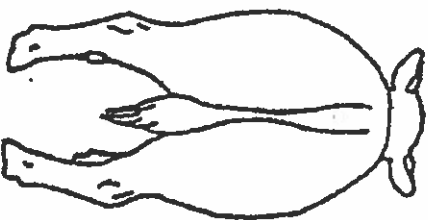
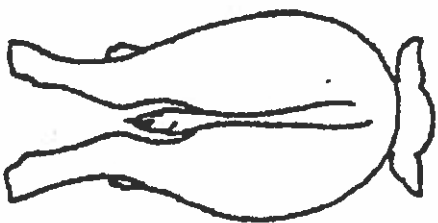
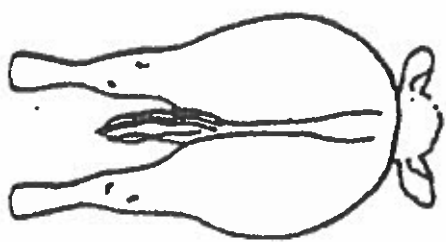


LEARNING LABORATORY KIT

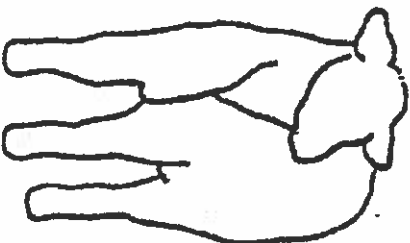
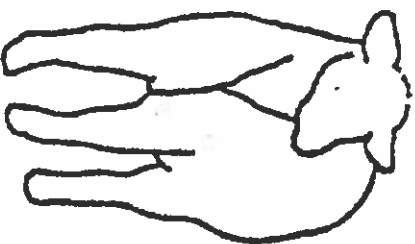
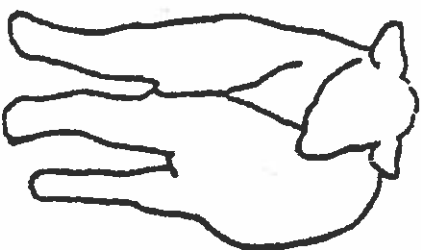
Quality Assurance and Animal Care: Youth Education Program
 This material is based upon work supported by Extension Service,
 United States Department of Agriculture, under special project number 93-EFSQ-4096.
 Graphic used with the express permission of the Ohio State University Extension.

Product distributed through the Ohio Agricultural Education Curriculum Materials Service

Beef Feet and Leg Structure



Beef Skillathon

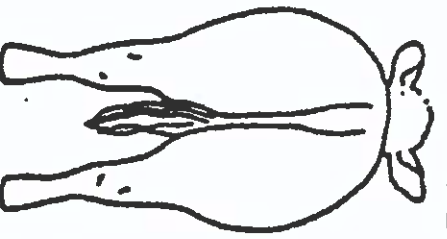


LEARNING LABORATORY KIT

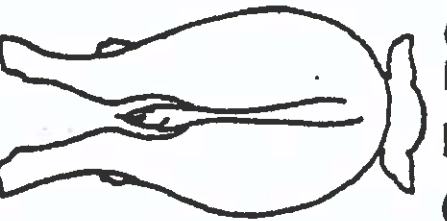
Quality Assurance and Animal Care: Youth Education Program
This material is based upon work supported by Extension Service,
United States Department of Agriculture, under special project number 93-EFSQ-4096.
Graphic used with the express permission of Ohio State University Extension.

Product distributed through the Ohio Agricultural Education Curriculum Materials Service

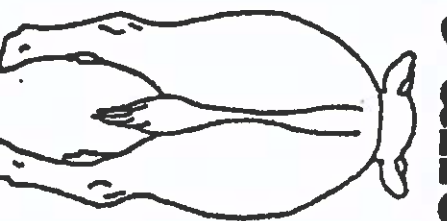
Beef Feet and Leg Structure



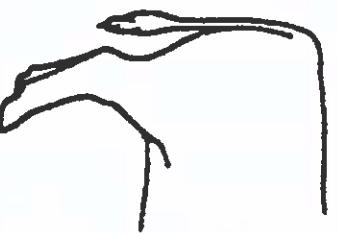
CORRECT



COW HOKED
OR SPYFOOTED



BOWLEGGED OR
PIGEON TOED



SICKLE
HOKED

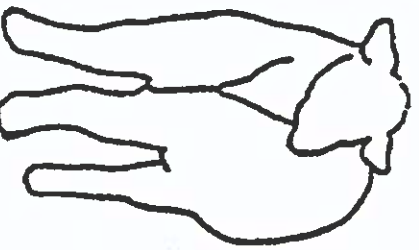


CORRECT

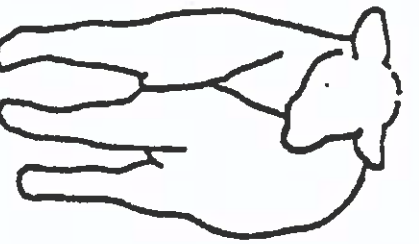


POSTLEGGED

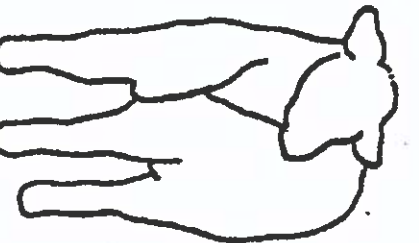
Beef Skillathon



KNOCK KNEED
OR SPYFOOTED



BOWLEGGED OR
PIGEON TOED



CORRECT



BUCK KNEED



CORRECT



CALF KNEED



LEARNING LABORATORY KIT

Quality Assurance and Animal Care: Youth Education Program
This material is based upon work supported by Extension Service,
United States Department of Agriculture, under special project number 98-IF5Q-4096.
Graphic used with the express permission of Ohio State University Extension.

Product distributed through the Ohio Agricultural Education Curriculum Materials Service

Use this task statement in conjunction with Medication Bottle and Syringe
and the Quality Assurance Skeletal Diagram poster

Medication Label Task

Objective

Read a label, calculate a dosage based on known weight, calculate the first day the animal could safely be marketed for food, demonstrate a knowledge of preferred injection sites, and demonstrate good technique of injection.

Situation

The steer you have been planning to take to the fair is lame. Today your veterinarian has diagnosed the steer's problem as foot rot and has given it an initial treatment at the time of the examination. The veterinarian has left additional medication with you to continue the treatment. The directions on the medication tell you to give the steer 2 cc's per 100 pounds body weight once daily for 3 days, beginning tomorrow, and to give it by intramuscular injection. Your steer weighs 600 pounds. Remember, your veterinarian treated the steer today, June 8, 200X, and you will treat the steer 3 more days as directed.

The label on the bottle looks like this:

SUSAN Q. VETERINARIAN 100 QUALITY DRIVE ANYWHERE, OH 43210 (614) 555-0000	
OWNER: <i>John Smyth</i>	DATE: <i>June 8, 200X</i>
ANIMAL ID#: <i>Steer 401 Angus</i>	INDICATIONS: <i>Foot Rot</i>
DIRECTIONS: <i>Give 2 cc per 100 pounds body weight Once daily intramuscular for 3 days</i>	
PRECAUTION: <i>Avoid muscle of high carcass value</i>	
WARNING: USE OF THIS DRUG MUST BE DISCONTINUED FOR <u>30 days</u> BEFORE SLAUGHTER OR MARKET FOR FOOD.	
ACTIVE INGREDIENT(S): <i>Hydrocillin</i>	

- How much will you need to give him each day?
- How much will you need to treat him for 3 days?
- What is the first day he could be safely sold for food?
- Demonstrate the preferred site and injection technique.



Quality Assurance and Animal Care: Youth Education Program

This material is based upon work supported by Extension Service, United States Department of Agriculture, under special project number 93-EFSQ-4096. Product distribution through the Ohio Agricultural Education Curriculum Materials Service.

Use this task statement in conjunction with Medication Bottle and Syringe
and the Quality Assurance Skeletal Diagram poster

Answer Key

- a. How much will you need to give him each day? 12 cc
b. How much will you need to treat him for 3 days? 36 cc
c. What is the first day he could be safely sold for food?

June 11, 200X at/or after the time the injection was given on June 11.

- d. Demonstrate the preferred site and injection technique.

The top of the bottle should be cleaned with cotton and alcohol, and a sterile needle should be placed on a sterile syringe. The plunger on the syringe should be withdrawn to about the same volume as you wish to inject, the needle pushed through the stopper, and the air ejected. With the bottle upside down, the syringe plunger is pulled back until the correct amount of medicine is in the syringe. If air bubbles are in the syringe they can be forced back into the bottle.

The first choice for intramuscular injection is the muscle tissue of the neck, as it is the least valuable market cut should the drug cause muscle scarring or blemishes. The injection should be placed ahead of the slope of the shoulder, above the center of the neck, and at least 2 inches below the top line of the neck. The large muscles behind the point of the shoulder can also be used. Least desirable areas are the round, except perhaps the lowest part of the round, and the top butt or top sirloin areas.

The needle is pushed through the skin and straight into the muscle. Pull back slightly on the syringe to make sure the needle is not in a blood vessel. Then, push the plunger to force the medicine into the muscle.

SUSAN Q. VETERINARIAN
100 QUALITY DRIVE
ANYWHERE, OH 43210
(614) 555-0000

OWNER: John Smyth

DATE: June 8, 200X

ANIMAL ID#: Steer 401 Angus

INDICATIONS: Foot Rot

DIRECTIONS: Give 2 cc per 100 pounds body weight Once daily intramuscular for 3 days

PRECAUTION: Avoid muscle of high carcass value

WARNING: USE OF THIS DRUG MUST BE DISCONTINUED FOR 30 days BEFORE
SLAUGHTER OR MARKET FOR FOOD.

ACTIVE INGREDIENT(S): Hydrocillin



Quality Assurance and Animal Care: Youth Education Program

This material is based upon work supported by Extension Service, United States Department of Agriculture, under special project number 93-EFSQ-4096. Product distribution through the Ohio Agricultural Education Curriculum Materials Service.

EXAMPLE OF LABEL FOUND ON OUTSIDE OF CONTAINER

Medication Label

OMNIBIOTIC

(hydrocillin)

Directions for use: See package insert

Warning: The use of this drug must be discontinued for 30 days before treated animals are slaughtered for food. Exceeding the highest recommended dosage level may result in antibiotic residues in meat or milk beyond the withdrawal time.

Store between 2° and 8° C (36° and 46° F)

Keep dry and keep away from light



Net Contents: 100 ml

Distributed by

USA Animal Health, Inc.




QUALITY ASSURANCE AND ANIMAL CARE

YOUTH EDUCATION PROGRAM

EXAMPLE OF LABEL FOUND ON OUTSIDE OF CONTAINER

Medication Label

Name of Drug _____ OMNIBIOTIC		Active Ingredients _____
(hydrocillin) _____		
Directions for use: See package insert		
Cautions and Warnings	{	Warning: The use of this drug must be discontinued for 30 days before treated animals _____
		are slaughtered for food. Exceeding the highest recommended dosage level may result in antibiotic residues in meat or milk beyond the withdrawal time.
Store between 2° and 8° C (36° and 46° F) _____		Storage _____
Keep dry and keep away from light		
Quantity of Contents _____	Net Contents: 100 ml	
TAKE TIME 	Distributed by _____	
OBSERVE LABEL DIRECTIONS	Name of Distributor _____	
USA Animal Health, Inc.		



QUALITY ASSURANCE AND ANIMAL CARE

YOUTH EDUCATION PROGRAM

Medication Insert

OMNIBIOTIC

(Hydrocillin in Aqueous Suspension)

For use in Beef Cattle, Lactating and Non-Lactating Dairy
Cattle, Swine and Sheep

*Read Entire Brochure Carefully Before Using This
Product*

For Intramuscular Use Only

Active Ingredients: Omnibiotic is an effective antimicrobial preparation containing hydrocillin hydrochloride. Each ml of this suspension contains 200,000 units of hydrocillin hydrochloride in an aqueous base.

Indications: **Cattle** - bronchitis, foot rot, leptospirosis, mastitis, metritis, pneumonia, wound infections. **Swine** - erysipelas, pneumonia. **Sheep** - foot rot, pneumonia, mastitis; and other infections in these species caused by or associated with hydrocillin-susceptible organisms.

Recommended Daily Dosage

*The usual dose is 2 ml per 100 lb of body weight
given once daily. Maximum dose is 15 ml/day.*

Body Weight	Dosage
100 lb	2 ml
300 lb	6 ml
500 lb	10 ml
750 lb or more	15 ml

Continue treatment for 1 to 2 days after symptoms disappear.

Caution: 1. Omnibiotic should be injected deep within the fleshy muscle of the neck or thigh. Do not inject this material in the hip or rump, subcutaneously, into a blood vessel, or near a major nerve because it may cause tissue damage. 2. If improvement does not occur within 48 hours, the diagnosis should be reconsidered and appropriate treatment initiated. 3. Treated animals should be closely observed for at least 30 minutes. Should a reaction occur, discontinue treatment and immediately administer epinephrine and antihistamines. 4. Omnibiotic must be stored between 2° and 8° C (36° to 46° F). Warm to room temperature and shake well before using. Keep refrigerated when not in use.

Warning: Milk that has been taken from animals during treatment and for 48 hours (4 milkings) after the last treatment must not be used for food. The use of this drug must be discontinued for 30 days before treated animals are slaughtered for food.

How Supplied: Omnibiotic is available in vials of 100 ml.



Medication Insert

Name of Drug

OMNIBIOTIC

(Hydrocillin in Aqueous Suspension)

Active Ingredients

For use in Beef Cattle, Lactating and Non-Lactating Dairy
Cattle, Swine and Sheep

Species and
Animal Class

Read Entire Brochure Carefully Before Using This
Product

For Intramuscular Use Only

Approved
Uses

Active Ingredients: Omnibiotic is an effective antimicrobial preparation containing hydrocillin hydrochloride. Each ml of this suspension contains 200,000 units of hydrocillin hydrochloride in an aqueous base.

Indications: Cattle - bronchitis, foot rot, leptospirosis, mastitis, metritis, pneumonia, wound infections. Swine - erysipelas, pneumonia.

Sheep - foot rot, pneumonia, mastitis; and other infections in these species caused by or associated with hydrocillin-susceptible organisms.

Recommended Daily Dosage

The usual dose is 2 ml per 100 lb of body weight given once daily. Maximum dose is 15 ml/day.

Dosage

Body Weight	Dosage
100 lb	2 ml
300 lb	6 ml
500 lb	10 ml
750 lb or more	15 ml

Continue treatment for 1 to 2 days after symptoms disappear.

Cautions
and Warnings

Caution: 1. Omnibiotic should be injected deep within the fleshy muscle of the neck or thigh. Do not inject this material in the hip or rump, subcutaneously, into a blood vessel, or near a major nerve because it may cause tissue damage. 2. If improvement does not occur within 48 hours, the diagnosis should be reconsidered and appropriate treatment initiated. 3. Treated animals should be closely observed for at least 30 minutes. Should a reaction occur, discontinue treatment and immediately administer epinephrine and antihistamines. 4. Omnibiotic must be stored between 2° and 8° C (36° to 46° F). Warm to room temperature and shake well before using. Keep refrigerated when not in use.

Route of
Administration

Storage
Requirements

Withholding
Times

Warning: Milk that has been taken from animals during treatment and for 48 hours (4 milkings) after the last treatment must not be used for food. The use of this drug must be discontinued for 30 days before treated animals are slaughtered for food.

Sizes
Available

How Supplied: Omnibiotic is available in vials of 100 ml.



MGA HEIFER SUPPLEMENT MEDICATED

SUPPLEMENT FOR GROWING/FINISHING BEEF HEIFERS

FOR INCREASED RATE OF WEIGHT GAIN, IMPROVED
FEED EFFICIENCY AND SUPPRESSION OF ESTRUS
(HEAT) IN HEIFERS FED FOR SLAUGHTER.

ACTIVE DRUG INGREDIENT

MELENGESTROL ACETATE 0.00022%
(EQUIVALENT TO 1.0 MG/LB.)

GUARANTEED ANALYSIS

CRUDE PROTEIN	MIN 10.00%
CRUDE FAT	MIN 2.00%
CRUDE FIBER	MAX 25.00%
CALCIUM	MIN 5.50%
CALCIUM	MAX 6.50%
SALT	MIN 4.50%
SALT	MAX 5.50%
POTASSIUM	MIN 0.60%
SELENIUM	MIN 13.00 PPM
VITAMIN A	MIN 100,000.0 IU/LB

INGREDIENTS

PROCESSED GRAIN BY-PRODUCTS, ROUGHAGE
PRODUCTS, GROUND LIMESTONE, SLAT, POTASSIUM
SULFATE, MAGNESIUM SULFATE, SODIUM SELENITE,
VITAMIN A ACETATE, VITAMIN D-3 SUPPLEMENT,
VITAMIN E SUPPLEMENT, ZINC SULFATE, ZINC
OXIDE, COPPER SULFATE, MANGANOUS OXIDE,
CALCIUM IODATE, COBALT CARBONATE FERROUS
SULFATE.

FEEDING DIRECTIONS

Each pound of supplement will provide 1.0 mg. of melengestrol acetate. Thoroughly mix and feed at the rate of 0.5 pound per head per day to provide 0.5 mg. of melengestrol acetate per head per day. Feed continuously throughout period heifers are being grown and finished for slaughter. This supplement should be fed in controlled amounts with roughage and other feed ingredients.

NOTE

NOT EFFECTIVE FOR SPAYED HEIFERS AND STEERS.

MANUFACTURED BY:
SKILLATHON FEED

NEW WEIGHT 50 POUNDS (22.7 KILOGRAMS)
OR AS SHOWN ON SHIPPING DOCUMENT

HOW TO READ A FEED TAG

MGA HEIFER SUPPLEMENT FEED TAG QUESTIONS

1. What is the main ingredient in this feed?
2. What is the active drug ingredient in this ration?
3. For how many days prior to slaughter should this feed be removed?
4. What is the crude fat level of this diet?
5. What is the crude protein level for this diet?

Beef Skillathon

MGA HEIFER SUPPLEMENT MEDICATED

SUPPLEMENT FOR GROWING/FINISHING BEEF HEIFERS

FOR INCREASED RATE OF WEIGHT GAIN, IMPROVED
FEED EFFICIENCY AND SUPPRESSION OF ESTRUS
(HEAT) IN HEIFERS FED FOR SLAUGHTER.

ACTIVE DRUG INGREDIENT

MELENGESTROL ACETATE 0.00022%
(EQUIVALENT TO 1.0 MG/LB.)

GUARANTEED ANALYSIS

CRUDE PROTEIN	MIN 10.00%
CRUDE FAT	MIN 2.00%
CRUDE FIBER	MAX 25.00%
CALCIUM	MIN 5.50%
CALCIUM	MAX 6.50%
SALT	MIN 4.50%
SALT	MAX 5.50%
POTASSIUM	MIN 0.60%
SELENIUM	MIN 13.00 PPM
VITAMIN A	MIN 100,000.0 IU/LB

INGREDIENTS

PROCESSED GRAIN BY-PRODUCTS, ROUGHAGE
PRODUCTS, GROUND LIMESTONE, SLAT, POTASSIUM
SULFATE, MAGNESIUM SULFATE, SODIUM SELENITE,
VITAMIN A ACETATE, VITAMIN D-3 SUPPLEMENT,
VITAMIN E SUPPLEMENT, ZINC SULFATE, ZINC
OXIDE, COPPER SULFATE, MANGANOUS OXIDE,
CALCIUM IODATE, COBALT CARBONATE FERROUS
SULFATE.

FEEDING DIRECTIONS

Each pound of supplement will provide 1.0 mg. of melengestrol acetate. Thoroughly mix and feed at the rate of 0.5 pound per head per day to provide 0.5 mg. of melengestrol acetate per head per day. Feed continuously throughout period heifers are being grown and finished for slaughter. This supplement should be fed in controlled amounts with roughage and other feed ingredients.

NOTE

NOT EFFECTIVE FOR SPAYED HEIFERS AND STEERS.

MANUFACTURED BY:
SKILLATHON FEED

NEW WEIGHT 50 POUNDS (22.7 KILOGRAMS)
OR AS SHOWN ON SHIPPING DOCUMENT

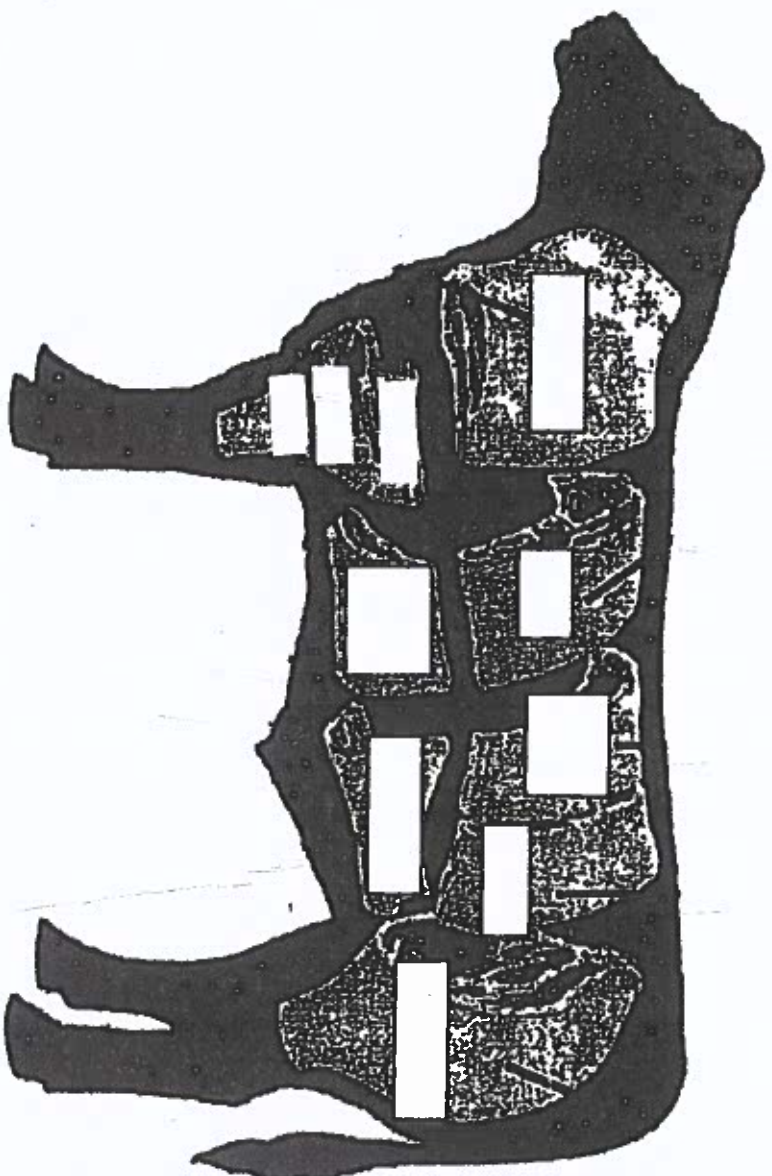
HOW TO READ A FEED TAG

MGA HEIFER SUPPLEMENT FEED TAG QUESTIONS

1. What is the main ingredient in this feed? *Processed Grain by-products*
2. What is the active drug ingredient in this ration? *Melengestrol acetate*
3. For how many days prior to slaughter should this feed be removed? *none required*
4. What is the crude fat level of this diet? *2%*
5. What is the crude protein level for this diet? *10%*

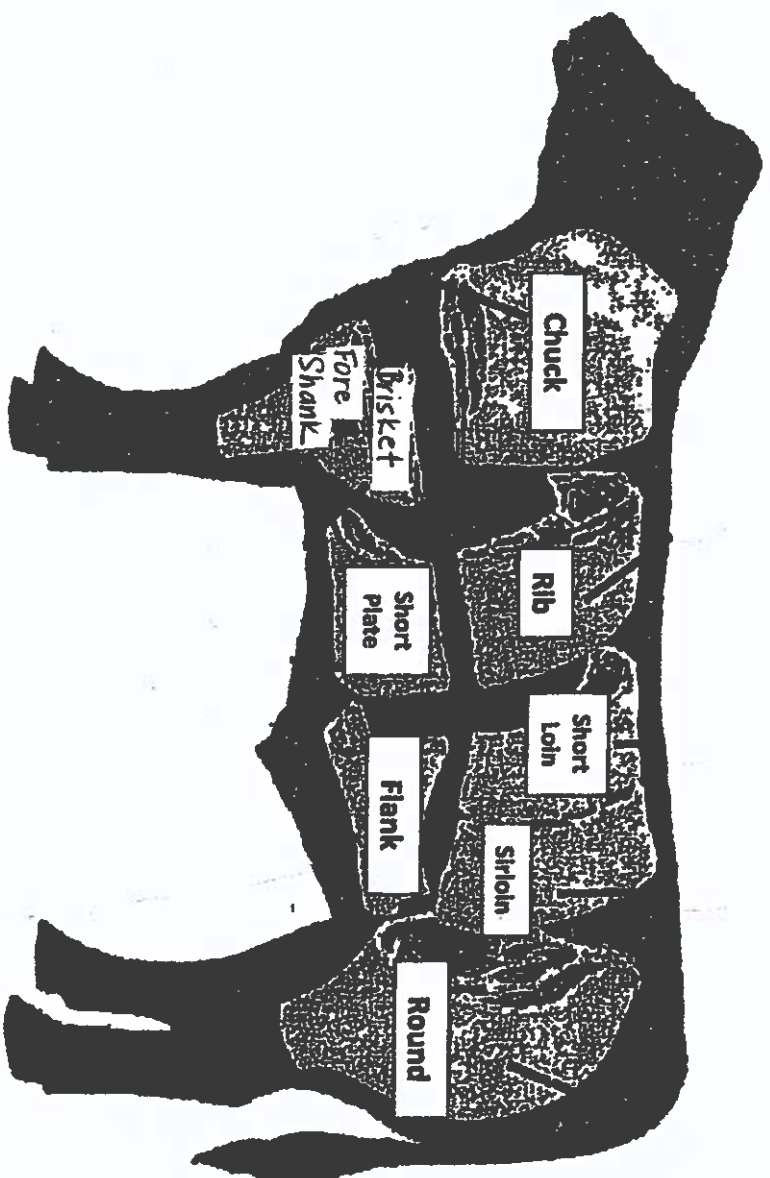
Beef Skillathon

Wholesale cuts of a Beef Animal



Beef Skillathon

Wholesale cuts of a Beef Animal



Beef Skilathon

This year we will be adding feed ingredient identification into the skillathon competition for the Clinton County Jr. Fair Beef Department. Below you will find listed the 10 different feed ingredients you will need to identify. The skillathon kit we will study at an upcoming meeting has the samples included but you also can explore and look to find these specific ingredients throughout your own feed or at your local feed mill. Being able to identify the ingredients in the feed your animal is eating is very important.

- Whole grain oats
- Cracked corn
- Steam rolled barley
- Whole kernel corn
- White salt
- Trace mineral salt
- Complete feed pellets
- Alfalfa pellets
- Dry molasses
- Steam rolled oats



Steam rolled
barley



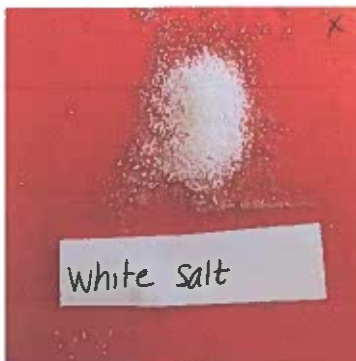
Steam rolled
OATS



Whole Kernal
corn



Trace mineral
Salt



White salt



Alfalfa pellets



Cracked corn



dry molasses



Whole grain
oats



Complete feed
pellets

