

'THE COMMPOST' NEWSLETTER

CLINTON COUNTY MASTER GARDENER VOLUNTEERS



THE OHIO STATE UNIVERSITY

COLLEGE OF FOOD, AGRICULTURAL,
AND ENVIRONMENTAL SCIENCES

May – June, 2017

Ohio State University Extension -

Clinton County

111 South Nelson Avenue
Suite 2

Wilmington, Ohio 45177

Phone: (937) 382-0901

L. Tony Nye

OSU Extension Educator

Agriculture/Natural Resources

www.clinton.osu.edu

Next *COMMPOST*

Deadline: July 10

Please submit items in MS Word
Format to Judy Grosvenor at:
grosvenor.judy@hotmail.com

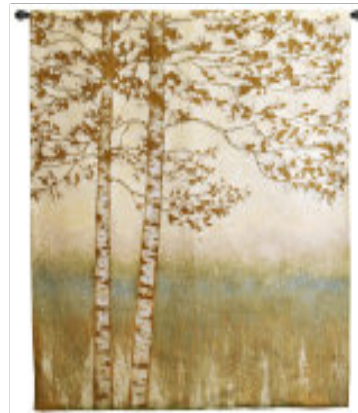
MARK YOU CALENDAR:

6- 15/26-2017: Pollinator
Scavenger Hunt. No MG meeting

July date TBA: Garden Tour

Aug. date TBA: Picnic at Jeff
and Beverly's home.

9-28-2017: MG meeting, Ext.
Office - 6:30 pm.



Nature

THERE IS A PLEASURE
IN THE PATHLESS WOODS,
THERE IS A RAPTURE
ON THE LONELY SHORE,
THERE IS SOCIETY,
WHERE NONE INTRUDES,
BY THE DEEP SEA,
AND MUSIC IN ITS ROAR,
I LOVE NOT MAN THE LESS,
BUT NATURE MORE.

- by Lord Byron

OVER THE GARDEN FENCE...

Letter from the Pres:

Look for comments from our President Cindy in the next newsletter.



Minutes: *Clinton County Master Gardener Association. May. 25, 2017*

In attendance: Jeff Drapalik-V. President, Beverly Drapalik, Dori Sabino, Judy Grosvenor, Roxanne Luff, Tony Nye-Ag Ed.

Meeting opened by our V. President, Jeff Drapalik. Call to order 6:00 pm.

Extension Report- Tony:

Working with the commissioner about the garden. **Action: Tony/Dori**

Vice President's Report: nothing to report · Working on 501C3 paperwork. **Action: Jeff**

Coordinator Report:

- There is a program hike in Miami County on June 23rd from 9 am to 12 pm, cost is free and register online go.osu.edu/walkinthewoods
- No meeting in June and was only a short May conference this morning.
- We need to spend the \$500 from State MGV by the end of August
- Reporting needed on all children's programs on May 16th Head Start program on June 22nd library program
- Farm Science Review looking for speakers- Sept. 19 – 21 in Madison Co.
- Grow Ohio – if you grow any vegetables and give them away, please weigh them before you donate them and let Judy know, for state program.
- Plant list from this year's plant sale handed out.

Treasurer's Report:

In April, we received a \$25 donation. Expenses \$261.39 to Dori for urns and plant a tree for Juanita.

Current projects and updates:

Pollinator week: Master Gardener funds to be used to buy 8 T-shirts for pollinator week. Jeff motioned, Judy seconded, all agreed. • 2 small • 1 medium • 2 large • 3 3XL **Action:** Roxanne

Articles to be written for the newspaper **Action:** Beverly and Tony

Courthouse sign, if possible get the sign for June 12th. **Action:** Debbie

The extension office opening hours for the scavenger hunt discussed. It is to be open between 1-4 between Monday and Thursday and be taken care of mostly by MGs.

Thu 15th: extension office staff. Mon 19th: Beverly, Tue 20th: Judy, Wed 21st: Debbie, Thu 22nd: Jeff, Mon 26th: Dori.

Pollinator Classes: Fri 16th 2-3 pm Lowes, plant pollinators. Thu 22nd 6-7 pm at Library, children program. Sat 24th 4 pm onwards, EEC Plant a pot Plan a pollinator garden. Dori, Tony, Roxanne, Roni.

Around \$1800 has been raised for the pollinator scavenger hunt and is in the care of the Extension Office. Tony will give a report after the program is over.

Plant Sale: Finances will be shown in May's financial report. \$57 was raised by donations from Master Gardener gardens. \$27 was raised by plant donations from the WGC garden club. \$1020.00 needs/split to be given to Juanita's Greenhouse. Written Receipt to be given to them.

Action: Beverly to write receipt. Action: Dori to give receipt to Juanita's Greenhouse.

The live video taken for the plant sale was a success and something to be used and done again next year.

Clinton County Master Gardner Demonstration Garden –

Status and timeline – Tony discuss, working with commissioners.

Other Projects: Judy wrote up two applications for State MGV awards. She submitted the Park Food Demo project for an award at the MG conference. And she submitted: A friend of MG - MB Financial, for award.

At the food demo garden the sign explaining what it is has gone missing. Jeff motioned, Roxanne seconded and everyone agreed the sign to be replaced. **Action:** Dori to get replacement sign
Demonstration garden at the Extension Office Garden beds to be made of 2 galvanized troughs, 1 landscape stone and 1 wood. If the commissioner says yes to the garden it will be done in two stages. Both galvanized troughs and pergola will be installed as soon as possible, once confirmation received. **Action:** Dori to get prices for 300 gal tanks and pergola. Can plan fall class for the other 2 beds to be created. \$1000 moved by Jeff, seconded by Roxanne for the demonstration garden.

Picnic to occur at the Drapalik. **Action:** Jeff to make the date and email everyone

Action: Tony will provide the pork if he is going to be there!

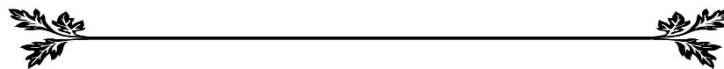
Tour Marianist Environmental Education Center (MEEC) floated as an idea if Cindy hadn't found somewhere else. **Action:** Cindy to find a tour.

Volunteer Hours: need to update hours. If you need help, please let Jeff know.

<https://ohio.volunteersystem.org/UniversalLogin.cfm>.

Meeting adjourned. Next meeting, August picnic at Drapalik.

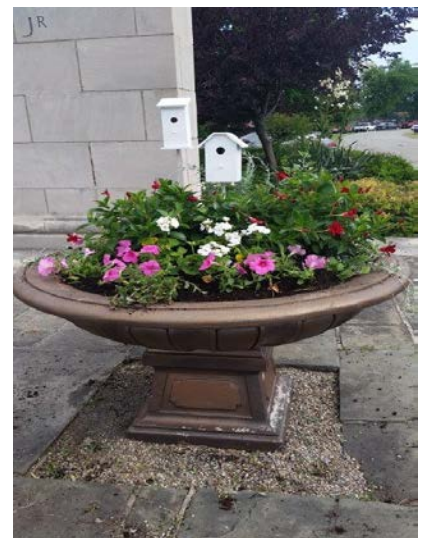
Respectfully submitted, Roxanne Luff, Secretary



Denver Park Urns Project:

New summer plantings by Dori, for the two front urns at the Denver Park. The CC Master Gardeners are responsible for one planting each year and we have chosen the winter display.

Be sure to sign up if you are interested in this Project.



FROM TONY

Greetings MG Fans,



It has been another wacky growing season up to this point. As the weather gets hotter and possibly much drier. It will be important to watch for signs for stress, disease and insects.

Again like most summers, I become absent from the office more often and will look to each of you to help in diagnosing potential plant issues.

Remember your training.

1. What is the plant?
2. What is normal for the plant?
3. What are the common problems with the plant?
4. What do you see that looks abnormal?
5. What is the overall health of the plant?
6. What exactly do you see?
7. What do you see on other plants?
8. Have you seen the plant's site condition?
9. Do you know enough about the plant or can you look elsewhere or ask someone else?
10. When did the symptoms first appear?
11. What is the horticultural history of the plant?
12. What is the environmental history of the plant?
13. What does the client think the problems is
14. What else needs to be considered?
15. Is the problem significant?
16. AND FINALLY – What was the diagnosis and WHAT did you recommend.

Until next time, thank you for everything you do!!

Tony



PLANT OF THE MONTH..

Care and Growing Garlic

Last October garlic was planted in many gardens. As the end of June the garlic will be harvested after its long growth.



There are two types of garlic: soft neck and hard neck. Soft neck garlic has a milder flavor and is usually braided. Hard neck garlic has a stronger flavor, is not braided and produces a scape. A garlic scape is the “flower stalk” produced a couple of weeks before it is harvested.

The scape is the added benefit of hard neck garlic. When the scape has curled around itself, it is ready to pick. Cut the scape off several inches below the curl. The scape's flavor is similar to garlic, but milder. The scape can be cut into small pieces and used in a salad, stir fried with mushrooms and onions, or made into pesto. The scape can also be frozen and used later.

Hard neck garlic is a two-for garden plant. Both the scape and the bulb can be used in a variety of ways. Another similar plant is the squash because both the flower and bulb can be used. Remember to utilize all the parts of your garden plants. You may be surprised. - by Jeff Drapalik



The Backyard Benefits of a Moon Garden

Take a nighttime stroll through moonlit flowers and evening pollinators.

By Tammi Hartung



Daiga Ellaby (public domain)

Lavender lures daytime fliers and nighttime pollinators.

Most of us notice how gorgeous gardens are when the sun is shining, but how often do we see what a garden looks like at night? Between dusk and dawn, when moonlight illuminates the plants, visitors can enjoy unique insight into a garden's personality. Night pollinators such as moths, native bees and bats are attracted to plants in a moon garden with white and pale-colored flowers that are intensely fragrant and produce a lot of nectar. As you walk through the moon garden, you will be able to watch these varied and industrious third-shift pollinators as they go about their important work.

MOTHS

Moths fly to white and pale blooms, which show up well in moonlight. These creatures have an amazing sense of smell; they love flowers that are highly scented. Some moths hover over the plants to sip nectar with their very long tongues, and others land on flowers while they feed. Many kinds of moths, like sphinx moths, will visit honeysuckle, columbine and amsonia blue star.

BATS

In the arid Southwest, three kinds of nectar-feeding bats pollinate night-blooming plants. They prefer the nectar of large flowers, such as agave, yucca and many types of cacti. Blooms of white, purple and green, along with very strong scents, will attract these beneficial nighttime creatures.

NATIVE BEES

Although most bee species, including domestic honeybees, do their pollinating during the day, a few native bees, such as small sweat bees, work by night, using the moon and starlight to navigate through the garden. They pollinate evening primrose, monarda and campion.

NIGHT-BLOOMING FLOWERS

A moon garden should include flowers in pale hues of yellow, blue, purple, green, white or cream, and pink, along with plants that have either silver or gray foliage. The pale blooms and silvery foliage reflect the light of the moon and stars, giving the garden a delicate glow. Plants with flowers that stay open through the night, such as yucca, or blossoms that open at dusk and close in the morning, such as evening primrose, are magnets for night pollinators.

9 PLANTS WITH SILVER AND GRAY FOLIAGE

- **Lavender:** flowers of purple and blue
- **Woolly lambs' ears:** pink flowers
- **Horned poppy:** yellow or orange flowers
- **Sea kale:** sprays of white flowers
- **Helichrysum:** yellow clusters of tiny flowers
- **Santolina:** yellow button flowers
- **Silver Blade evening primrose:** large pale yellow flowers
- **Pussy-toes:** delicate white or pink flowers
- **Sage:** flowers of purplish blue

From: <http://birdsandblooms.com/gardening/backyard-wildlife/backyard-benefits-moon-garden/>

2017 WORKSHOPS, EVENTS, & SEMINARS:

Sept. 29 - 30, 2017: MGV State Conference. Hosted by Fairfield & Franklin Co. MGV in Columbus. Details and hotel and conference sign up to be released July 5th. Watch for more info.

Sept. 19 thru 21, 2017: Farm Science review: in Madison County. Will be looking for MG volunteers. More details to follow.

The Ohio Invasive Plants Council (OIPC) has posted on their website, www.oipc.info, new factsheets on some of the most problematic invasive plant species in Ohio. Check it out. Also other interesting websites:

Ohio State MGV website: <http://mastergardener.osu.edu>. And www.ohioline.osu.edu;

Ohio MG Volunteer system sign in: <https://ohio.volunteersystem.org> and

This is our county Facebook link to:

<https://www.facebook.com/clintoncountymastergardeners/>

OSUE's 'Buckeye Yard and Garden on Line': <http://bygl.osu.edu/> and <http://vegnet.osu.edu>;

<http://ouohio.org/home-gardens/> ; and <http://www.hummingbirds.net/map.html>.

#####

Clinton County MG 2016 Meeting Dates:

The Association meets on the fourth Thursday of each month unless otherwise noted. All regular meetings begin at 6:30 pm. (*note time change*)

May 25	Regular Meeting 6:30 pm
June 15 - 26	Pollinator Hunt project
July	Road Trip - TBA
August - TBA	Picnic at Jeff and Beverly. Date TBA 6:00 pm
Sept. 28	Regular Meeting 6:30 pm
Oct. 26	Regular Meeting 6:30 pm
Nov. 16	Regular Meeting 6:30 pm

#####

THOUGHTS... "My green thumb came only as a result of the mistakes I made while learning to see things from the plant's point of view." - H. Fred Ale

#####

Master Gardener Program - Ohio State University Extension Our Mission:

The Ohio State University Extension Master Gardener Program provides knowledge to and develops the leadership abilities of volunteers who, in turn, enable others to improve the quality of their lives by enhancing their home and community environments through horticultural education and activities.

OSU Extension Clinton County
111 South Nelson Ave., Suite 2
Wilmington, OH 45177

All educational programs conducted by Ohio State University Extension are available to clientele on a nondiscriminatory basis without regard to race, color, creed, religion, sexual orientation, national origin, gender, age, and disability or Vietnam- era veteran statue.