



Master Gardener
Ohio State University Extension Volunteer

Blades and Blooms

Master Gardeners of Clark County
PO Box 158, Springfield, OH 45501-0158

Volume 18 Number 06 June 11

Mark Your Calendar !

June

- | | |
|----|--|
| 1 | 9-12 Garden Cleanup
12:30 PP&B Sale wrap up
1:30-2:30 Per. Com |
| 2 | 9-12 Helpline |
| 4 | 9-noon "Blue Ribbon
Blooms--Secrets of Flower
Show Success" |
| 6 | 9-12 Helpline
8:30 OSUE Horticulture
Staff Meeting
10-12 OSUE Staff OC |
| 7 | 1-3 GG Jubilee Com. |
| 8 | 6:30 Exec Board |
| 9 | 9-12 Helpline
Early Bird Deadline for
International MGVC Confer-
ence in Charleston, WV |
| 10 | 9-11 Flower Fair Show @
Polly Cooper's
9-3 Diagnostic |
| 13 | 9-12 Helpline |
| 16 | 9-12 Helpline
7 pm Garden Walk |
| 20 | 9-12 Helpline
B&B Deadline |
| 22 | 9 am Fair Entrance Clean up |
| 23 | 9-12 Helpline
9-3 Tree Survey |
| 25 | 5 pm MGVC Picnic @ Polo
Club |
| 29 | 9 am Utzinger Clean Up |
| 30 | 9-12 Helpline
Fair Entries due |

President's Message:

A friend of mine left for Brazil today. I was so jealous until I happened to think that I had my own rain forest right here in Ohio. One thing is certain; my plants do great when they get unlimited amounts of water! I guess all these years I thought I was watering correctly, ha, ha.

What a great plant sale we had! Can you believe it, we sold over \$5,200 in plants and still are selling some! If you missed the sale, we still have a few of the plants we purchased for sale. Also there are some half price plants at OSU Extension office for sale. Marilyn did such a great job organizing the whole event! Marilyn, you are a star! Thanks also to La Donna for organizing the barn sale! A big thank you to all who donated plants, dug plants, potted plants, and sold plants! What an organization!

Be sure to get a copy of the Memorial Day edition of The Springfield Paper as we put an ad in honoring our veterans. I think this may be a first for our organization and all of you deserve our thanks and gratitude for your service and dedication to this country. I can't imagine the sacrifices you all have made on our behalf.

If you haven't been walking in the gorge on Fridays, you have missed one of the greatest opportunities of our association. I do have to say that we have had more participants this year to view the splendor of the gorge and the force of Mother Nature. Besides our members, we have met such nice people from around the state that come to enjoy our treasure. A big THANK YOU to Pam for providing this opportunity to us.

Get your tree measuring sticks out and get ready to measure our community trees. This is such a great thing to do for our community and remind us of the impact trees have on our environment.

In spite of the daily rain, the new shade arbor is almost up, the brick path is laid, the buckeyes have been transplanted, the perennial committee is revamping their gardens, the herb committee has replanted some of their gardens, the fair entrance has been weeded and planted, mowing has occurred on the turf, plants have been moved from the greenhouse, the fountains are ready to be installed in front, and work has begun in the Settlers Garden. If we just get a few days to get the drainage in the Victory Garden so it can get planted, we should be on schedule. I know it is hard when there is only one day a week of sunshine to think of spending it somewhere other than at your own home. We will need ALL hands on deck to get everything planted soon! Hope we get everything done before vacation time begins.

Ruth Ann

"To avoid criticism, say nothing, do nothing, be nothing". Robert Gates,
Secretary of Defense

Pam's Posies



What an amazing bunch of volunteers! I thank you for being so flexible. I thank you for dropping everything on a moment's notice to come to the GLG. I thank you for working so hard to get the job done. We had a great crew on May 24th planting the field trials and a few other odds and ends. We did it all in one day and did it between the rains. It was the worst soil conditions we have had to mess with. However, everyone bent over backwards (literally!) to try to keep soil compact to a minimum. I saw some very interesting poses and I am sure there were some very sore muscles after the fact!

If you haven't stopped by the office to pick up your MGCV thank you gift, the newly-designed MGCV coffee mugs, please do so soon!

The gardens are coming along despite the weather's attempt to stop us completely. We have been very flexible and resilient and have persevered through this horrible spring! It just makes me wonder what the summer is going to bring.

I hope that between the rains and the work in the GLG you have been able to get your gardens planted. If not, we have lots of people who will share the summer bounty!

Pam

Pamela J. Bennett
State Master Gardener Volunteer Coordinator
Extension Educator, Horticulture
Ohio State University Extension

ATTENTION HELPLINE WORKERS!

The Champaign County MGCVs are hosting a Diagnostic Update on June 10th at the OSU Extension office in Urbana - see enclosed flyer. If you are a regular volunteer on the HelpLine (more than one time per year) I will pay for your registration fee. Fill out the registration form and return to Jo before the deadline so that we can send your money into the Champaign office.

AMERICA IN BLOOM

Springfield in Full Bloom is once again working to beautify the city and prepare for the judges visit on July 7-8th. I have volunteered the Gardens for an evening reception for the judges and a few city dignitaries. If anyone would like to chair a committee to set this event up and organize the food, decorations, etc., please let Carolyn know. If you want to help on the committee, also let Carolyn know. We have a budget for the event and will likely have tents and tables in the garden - weather permitting - of course! In addition, keep this date in mind as you plan work in your garden. We will give the judges a tour of the GLG and will ask volunteers to be on hand as well. This year the committee will be selling yard signs for \$10.00 to raise money for the effort and to promote the event in the community. If you would like a sign, contact Carolyn. More details to follow via email as we learn more from the SIFB steering committee. For more information go to: <http://springfieldinfullbloom.com>



Jo's Notes

Congratulations

Cindy Schneider is a Grandmother!! Her son, Samuel and wife, Kali are the proud parents of Kinley Olivia, who arrived 5:25 p.m. on April 27, 2011. She was 20" long and weighed 7 lbs. 1.4 oz. The parents are doing great and so is proud grandmother.

Thoughts and Concerns

Denny Dalton's knee surgery was put on hold until other health issues are solved.

Email Address Change

Julie Jones new email address is:
julie&rob@swohio.twcbc.com

Thank You

I want to thank all MGCVs for cleaning out your personal file folders. I believe almost everyone has come in and checked out their folders.

Carolyn's Corner



FIELD TRIALS

After many emails and rescheduling of dates, the Field Trials are in the ground. At a moments notice the Master Gardeners came to the gardens and the beds were done. The pictures should be great since the planters were trying to make as few footprints as possible. Some of the planting poses were quite interesting.

Thanks to all of you who helped get this done. You are the best, no question about it.

THANK YOU

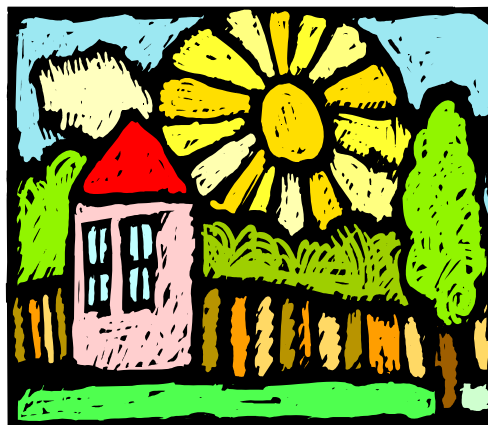
ADOPT-A-BED

Still have a few beds that need to be adopted. This is an easy way to get volunteer hours. You can do it when you have time; in the evening on the weekends, whatever works best for you. Just keep the beds weed free and no dead heading. Give me a call if you are interested. 321-6377

Thank you

HAPPY BIRTHDAYS

June 17	Sheryl Kolarsky
June 20	Jane Malowney
June 23	Susie Anderson
June 23	LaDonna Lowe
June 28	Donna Comer



Reminder: All fees for recertification, programs, events, etc. that are sponsored by the Master Gardeners of Clark County need to be payable to Master Gardeners of Clark County and mailed to Master Gardeners of Clark County, PO Box 158, Springfield, OH 45501-0158. OSU Extension cannot accept any checks for the Master Gardeners. Thank you.

Native Plant of the Month Nodding Onion (*Allium cernuum*)

by Janet Hannel

The native allium has long-lasting pale pink flowers bending from a leafless stalk. I became truly fond of this attractive plant when I realized how easy it was to grow! I became even fonder when it was one of the plants we observed at Gallagher Fen, a totally different environment from my growing location. Nodding onion is found over much of the U.S.

This plant is easy to identify because of its pink nodding flowers. John Hilty, author of *Prairie Wildflowers of*

Illinois, writes

“Nodding umbels of flowers are an evolutionary adaptation that tends to restrict insect visitors to bees. Other insects are more reluctant to hang upside down while attempting to feed on nectar or pollen. The nodding habit may also protect the nectar from rain.”



Now you know!!! An interesting, easily remembered, botanical fact!!

By the way, when I googled Gallagher Fen (always looking for correct spellings!!) there was the nodding onion on the home page.

I have lots of nodding onion plants and am willing to share, hoping to diversify our plant base. In my prairie garden (I use this description loosely) cup plant, wild senna and nodding onion were the fastest to seed. And although I haven't done it scientifically, I think the flowers last longer than those of the big fat round alliums which are now so popular. They seem to be here today, falling over or losing their petals tomorrow!!

Herb of the Month:

PATCHOULI (*Pogestemon cablin*)

Grown for the intoxicating fragrance of its leaves and its essential oil, this tender perennial is a shrubby plant with fuzzy serrated leaves and square stems. Patchouli may grow as tall as three feet. It grows best in hot weather, but not in full sun and is considered an annual in our zone. Patchouli is fast growing and should be pinched back frequently. It is so easy to propagate by soft stem cuttings that, for me, it is easier than starting from seed. I propagated my original plant last winter and now have two healthy plants.

Patchouli is native to India, getting its name from the Tamil word for *green leaf*. Although not as well known as other members of the mint family, it has been grown in the United States since the early 1900s. The, musky, sweet smell has long been associated with mystery and elegance. To prevent moths, early



Chinese silk merchants as well as Scotch cashmere merchants used to pack dried leaves of this plant with their products to prevent moths, thus provoking the association.

Fresh patchouli leaves can be used in seasoning. They also add a distinctive texture to potpourri. The oil is used to flavor chewing gum, baked goods and candy. It is not widely used as medicine, but aromatherapists consider the oil an aphrodisiac. Tabu, Bill Blass and Polo all have commercial perfumes that contain patchouli oil. Incense is often scented with it. Sally Day's brother had some wonderful patchouli soap at his booth at Garden Fling. Patchouli is my favorite scent for soap.

Caterpillars and leaf blight can be problems but I found it to be a plant that requires little care and smells so good, and is well worth having in your garden (or container) and bringing in to winter over!

Sources:

[The Big Book of Herbs](#) by Tucker and DeBaggio, [The Complete Book of Herbs](#) by Lesley Bremness, University of Georgia and [The Herb Companion](#) internet sites.

Natheta Mercer and Peggie Elsnau

COMMITTEE REPORTS:

BARN SALE

Thank you to everyone who helped make the 2011 Plant & Barn Sale such a success!! Thank you to those who selected and ordered plants to sell, thank you to Jo & Kathy for all your graphic design work, media contacts, and for patiently answering my 4 million questions, thank you to that “work crew” who worked in the rain and cold, digging and potting for 3 straight, long days! Thank you to the “set up” crew who organized all the plants, painted pots, and to LaDonna and her crew who cleaned & organized the barn and its entrance for the Barn Sale. Thank you to everyone who brought out items for the Barn Sale, donated plants, put up signs in your yard, brought out wagons and who passed along a lot of useful ideas to make this a wonderful day for everyone who worked it and shopped at it!! And it all paid off. . . so far, we have made approx. \$5500! And that amount may still grow . . . because . . .

I have good news!! (I love good news!) For those of you who missed the sale or who just need a few more plants to complete your garden plans, or some for your friends and family, we have a small selection of plants left that you can still buy at the clearance price!! Who doesn't love a bargain?? Plants are \$.50 cents to \$5! That includes the big gallon container pots with huge beautiful plants in them! The plants are located at the far end of the trellis and the pots are color coded for price. You can pay me or Ruth Ann and we will get the money to the Plant & Barn Sale Fund! I would love to see us sell everything and as you already know, the money is going to a GREAT group to do GREAT things!!

A “Perennial Plant & Barn Sale” wrap up meeting is scheduled for after the clean-up (12:30 pm) on June 1st. I welcome all comments, suggestions, & ideas on what we need to do to improve the sale for next year!
Marilyn Hinderer

GATEWAY GARDEN JUBILEE

All Master Gardeners are invited to attend the **2011 Gateway Garden Jubilee planning meeting** to be held on **Tuesday, June 7 from 1:00 – 3:00 p.m.** at the OSU Extension Office. Just a reminder: the Gateway Jubilee will be held on Saturday, August 6, 2011. Please come!

If you have any questions, please call either Lois O'Keefe @ 322-6261 or Janet Heater @ 964-5074. All **Garden Chairs** need to attend. Hope to see you there!
Janet Heater and Lois O'Keefe

PERENNIAL PLANT

The arbor expansion is underwater. . . uh I mean underway! Ron Kurth and Shonil Datta got all but a few posts set before the next rainy spell came. It looks so good to see a little progress! Whenever we can get into the gardens, we have got our work cut out for us! Becky Miller is hard at work putting together a design in which we will utilize our new shipment of shade loving perennials. We will be introducing some hellebores, ferns, heucherellas, and tiarellas to name a few as well as a few trees to expand our shade. We really will get caught up with lots of team work!

Kathy McConkey and Dot Burkholder



UTZINGER GARDENS

Buckeye harvest is in! What a crazy spring we have had, but I am very thankful that we also have crazy volunteers. A big thank you goes to Susie Anderson, Lois O'Keefe, Peggie Elsna, Natheta Mercer, Ruth Ann Rahim, Jon Vanderglas and Fred Rufener for digging the seedlings and potting them. The day was a “suddenly summer” day without warning, heat and humidity were upon us. Thanks to all of the help, we potted approximately 200 for our tree sales. An equally big thanks to Ruth Ann, Natheta and Fred who helped truck them over to Utzinger on a very rainy and cool Tuesday!

I am going to keep my fingers crossed that we will be able to hold our first, delayed clean up May 25th. The gardens all need weeded, and we do have a supply of mulch ready. Thank you to Natheta, Debbie, Ruth Ann and Donna who have been over to tend your gardens and a bigger thanks for reporting your hours to me.

We also have nature news. Joan Corbitt reported sighting fox pups playing along the deck at the ODNR building. According to Nick, there is a litter of five who regularly move from building to building. It's a plus for us, because, I have seen no rabbits munching in the garden. On the down side, ticks are also heavy with all of our wet weather. Off is available in the garden shed.

Cindy Schneider

CUTTING GARDEN

It's hard to believe that the GG Jubilee is on the horizon! The Cutting Garden folks would greatly appreciate any donations of vases. We use the larger ones more than the smaller ones but about anything that can hold a bouquet of flowers with some water would be greatly appreciated. Jo has been gracious enough to collect them in the office and send them out to the barn. (Thanks Jo) Also if you would like to help put together flower arrangements during the GG Jubilee, please let Fran Davidson know. Her number is 937- 609-0956.
Fran Davidson

EARLY OHIO SETTLER'S GARDEN

We are all getting a little antsy about the rain but we have hope that sunshine will find us. On Monday, May 16th we did get our gardens weeded and our straw paths laid. We are hoping to get our planting done on Thursday, May 26th and then the settlers will all take a deep breathe. We have some new hands that have joined us in our gardens and we are happy to see them. This year we are putting in a lot of new vegetables that still are from the 1800's but will be of interest to us all. We got our new apple tree planted to the side of our gardens and we were happy to see the Johnny Appleseed tree made it through the winter and the rabbits. Colonel White will be returning to his place of honor hopefully this coming week. We wish all of you good luck with your gardens and come by and see ours.

Jean Rickards

HELPLINE

Not only has the rain slowed gardening, it has slowed down the phone calls to Helpline. We are averaging only 3 to 6 calls a day including phone messages and walk ins. Most questions are: how, when, where and sometimes why type.

We have only one opening for June and two for July. Thank you all for the help.

MONDAY

JUNE 6 Ed Wichaël
JUNE 13 Open
JUNE 20 Ed Wichaël
JUNE 27 Ed Wichaël

THURSDAYS

JUNE 2 Marcia Roberts
JUNE 9 Rosalind Mader
JUNE 16 Jody Frisby
JUNE 23 Ed Jenkins
JUNE 30 Lola Walston

I will not be available the 1st week of June. If you have any questions call Kathy McConkey.
Rick McKinstry

WHY TREES MATTER

If you are on this committee, plan on meeting at the OSUE office on June 23 at 9:00 a.m. We will start in the conference room discussing our game plan. As mentioned before, we will be surveying random sections of the city rather than starting out in one spot and working through the city. This random survey will give us a dollar amount that we can then extrapolate for the entire city. This will allow us to share with our officials the potential use of the data. Please come prepared to survey the trees. I'll have the clipboards and data collection materials - be sure to bring your Biltmore sticks and any resources that you need. Bring a backpack and water and snacks as we will be splitting up around the city.

Pam Bennett

"A something in a summer's Day
As slow her flambeaux burn away
Which solemnizes me.
A something in a summer's noon --
A depth -- an Azure -- a perfume --
Transcending ecstasy.
And still within a summer's night
A something so transporting bright
I clap my hands to see --
Then veil my too inspecting face
Lets such a subtle -- shimmering grace
Flutter too far for me --
The wizard fingers never rest --
The purple brook within the breast
Still chafes it narrow bed --
Still rears the East her amber Flag --
Guides still the sun along the Crag
His Caravan of Red --
So looking on -- the night -- the morn
Conclude the wonder gay --
And I meet, coming thro' the dews
Another summer's Day!"
- Emily Dickinson,
A Something in a Summer's Day

PLANT OF THE MONTH

SEDGE

CAREX (KAH-recks0)

Sedges look very much like grasses but they are only distant relatives. Most sedges have long, narrow to relatively broad sword-shaped leaves that arch upward, outward, and then down, usually from a dense central clump. The spikes of the flowers usually aren't showy, but they are a curiosity as there are separate male and female flowers in each spike. Most important is that sedges have flower stems that are triangular in cross-section; grasses have round ones.

I used to wonder what the difference was between grasses and sedges. Once I asked a worker at a garden center but I didn't get a good answer. A fun, quick way to tell the difference is to find a flowerstalk and roll it between your fingers. Grasses have round stems and will roll as requested. The sedges have triangular stems and won't budge.

Ornamental sedges prefer full sun to partial shade as a general rule and like evenly moist, or sometimes even wet soil. Many will grow with their roots or even the crowns constantly under water. This sounds like a great plant to use in the wet season we're having this year.

Sedges will grow for decades all on their own without division, but dividing them is the simplest way to obtain more plants of a favorite cultivar. Dig up the clumps at any time of year and cut them into sections. Sedges will also sprout readily from seed sown in the fall under whatever conditions that species prefers.

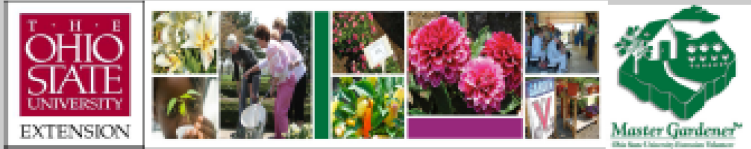
The foliage is generally evergreen but can be a mess of brown and green by spring. To tidy up things, chop them back to nearly ground level in the spring so the newer leaves have some growing space.

These plants will provide textural interest with their fine, arching foliage. You can use them around the edges of shaded walkways or curving beds, or as an accent in the garden. You can also use them in containers, for a mass planting, in a mixed border, rock garden, and in wet areas.

Yellow-green Bowles' golden sedge will bring a bit of sunlight to the shade garden, especially when planted with hellebores or bigleaf ligularia. I checked with Meadow View and they don't carry this variety. They do have a variety called 'Everest' which is green and white and about 12 inches high.

Sedges are rarely bothered by pests or diseases.

Dot Burkholder



**Master Gardeners of Clark County
Salutes their Veterans**

- United States Air Force
Thomas Davidson
Bill Edwards
Rick McKinstry
Larry Pfeifer

- United States Army
Ed Jenkins
Ron Kurth
Fred Rufener
Ed Wozniak

- United States Marine Corps
Pat Casey
John Eichelberger
Jim Hamilton
John Massie
Charles Morris
George B. Simon II

- United States Navy
Fred Miller

**Master Gardeners are volunteers who teach the
community research-based horticultural practices
and have fun doing it.**

Ohio State University Extension
Clark County
4400 Gateway Blvd., Suite 104
Springfield, OH 45502-6330



Garden Clean up June 1st 9am - Noon



The Master Gardener “Blades & Blooms” is a publication of the Clark County Extension Office, 4400 Gateway Boulevard, Suite 104, Springfield, Ohio, 45502, 937-521-3860. The Master Gardener Advisor is Pam Bennett.

OSU Extension embraces human diversity and is committed to ensuring that all educational programs conducted by Ohio State University Extension are available to clientele on a nondiscriminatory basis without regard to race, color, age, gender identity or expression, disability, religion, sexual orientation, national origin, or veteran status. Keith L. Smith, Associate Vice President for Agricultural Administration and Director, OSU Extension. TDD No. 800-589-8292 (Ohio only) or 614-292-1868.